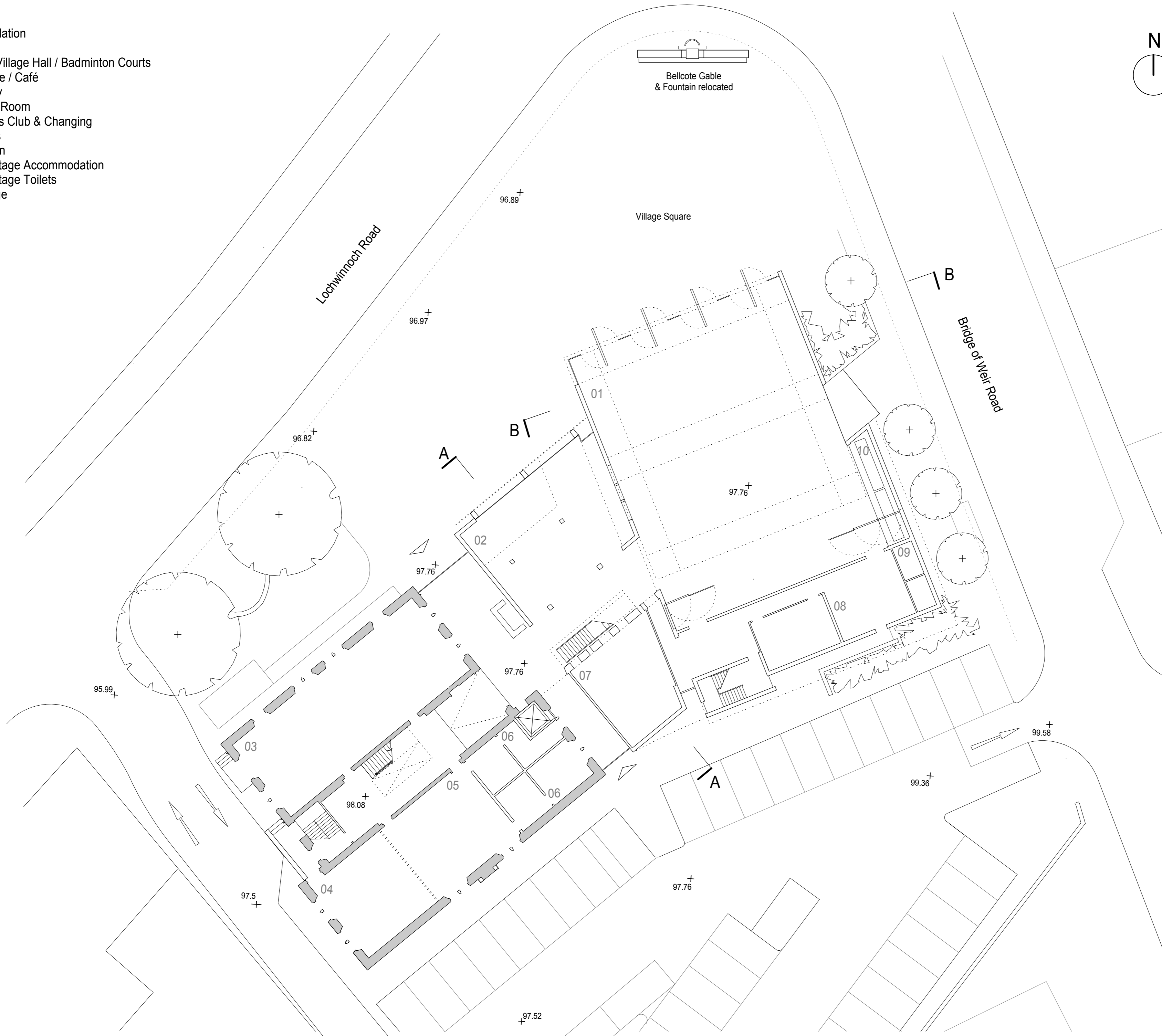


Accommodation

- 01 - Main Village Hall / Badminton Courts
- 02 - Lounge / Café
- 03 - Library
- 04 - Youth Room
- 05 - Fitness Club & Changing
- 06 - Toilets
- 07 - Kitchen
- 08 - Backstage Accommodation
- 09 - Backstage Toilets
- 10 - Storage



Holmes Partnership accepts responsibility for this document only to the commissioning party and not to any other.
 Holmes Partnership does not accept liability for accuracy or veracity of survey information provided by others and used in the preparation of this drawing. All vertical and horizontal dimensions and levels provided by Holmes Partnership and based on the survey information provided by others must be checked and verified on site.

NOTES
 Copyright: Holmes Partnership.
 DO NOT SCALE: Use figured dimensions only.

A	Street Parking removed	19.02.07
NOTES	DATE DRAWN	CHECKED



Holmes Partnership
 Architects & Planning Consultants
Glasgow
 89 Minerva Street
 Glasgow G3 8LE
 Telephone: 0141 204 2080
 Fax: 0141 204 2082
 e-mail: glasgow@holmespartnership.com
Edinburgh
 80 Commercial Street
 Leith Edinburgh EH6 6LX
 Telephone: 0131 553 2111
 Fax: 0131 553 1300
 e-mail: edinburgh@holmespartnership.com

PROJECT
Kilmacolm New Community Centre, Inverclyde for KNCC Ltd.

DRAWING
PROPOSED GROUND FLOOR PLAN

SCALE	DRAWN	CHECKED	DATE
A2 : 1:200	DY		Apr 06

NUMBER
2015 - AL (0) 201A