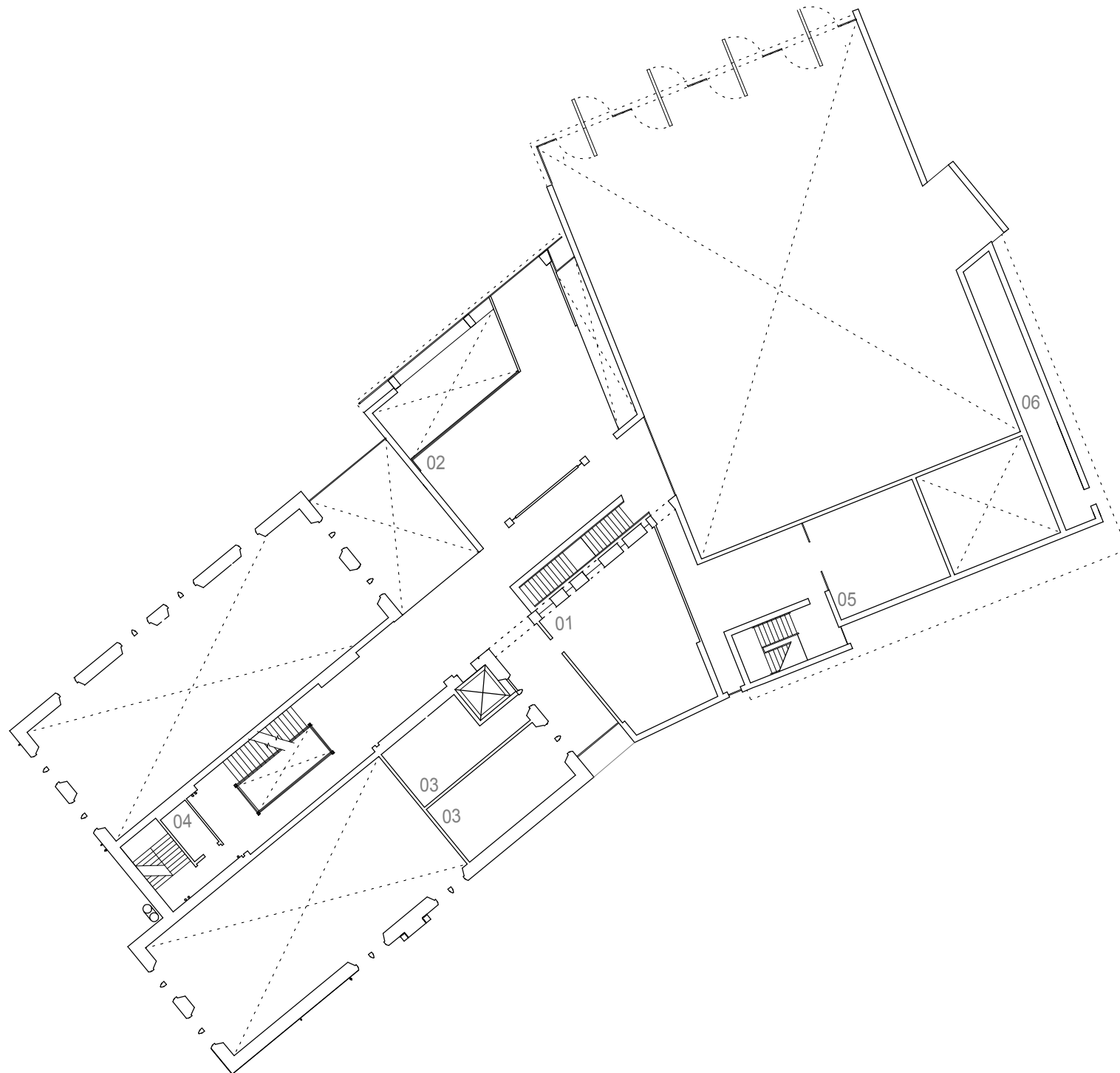


Accommodation

- 01 - Meeting Room
- 02 - Community Child Space
- 03 - Toilets
- 04 - Storage
- 05 - Village Offices
- 06 - Plant Room



Holmes Partnership accepts responsibility for this document only to the commissioning party and not to any other.
Holmes Partnership does not accept liability for accuracy or veracity of survey information provided by others and used in the preparation of this drawing. All vertical and horizontal dimensions and levels provided by Holmes Partnership and based on the survey information provided by others must be checked and verified on site.

NOTES
Copyright: Holmes Partnership.
DO NOT SCALE: Use figured dimensions only.

NOTES	DATE
	DRAWN
	CHECKED



Holmes Partnership
Architects & Planning Consultants

Glasgow
89 Minerva Street
Glasgow G3 8LE
Telephone: 0141 204 2080
Fax: 0141 204 2082
e-mail: glasgow@holmespartnership.com

Edinburgh
80 Commercial Street
Leith Edinburgh EH6 6LX
Telephone: 0131 553 2111
Fax: 0131 553 1300
e-mail: edinburgh@holmespartnership.com

PROJECT
Kilmacolm New
Community Centre,
Inverclyde
for KNCC Ltd.

DRAWING
MEZZANINE FLOOR PLAN

SCALE	DRAWN	CHECKED	DATE
A2 : 1:200	DY		Apr' 06

NUMBER
2015 - AL (0) 202